



Making E-Mail Secure with Your Fingerprint

SendItSecure™ Features:

- It takes just five minutes to setup and enroll into SendItSecure™.
- Integrates smoothly with Microsoft Outlook or use any e-mail software
- You can send secure messages to non-subscribers using SendItSecure's Secure Message Pickup feature.
- Huge attachments, even several gigabytes in size, can be sent securely without the limitations imposed by your regular e-mail services.
- Messages are encrypted using long encryption keys for ultimate security.
- Highly discriminating biometric algorithm from BIO-key means extremely low false match rate (less than 1 in 1,000,000).
- SendItSecure™ supports dozens of fingerprint reader models from several manufacturers.
- You control who is able to read your messages by requiring receivers to authenticate themselves with a fingerprint.
- You know for certain who authored a SendItSecure™ message that you have received.
- Biometric authentication is very fast and simple.
- There is no additional infrastructure to install.

Only you have your fingerprint.



1800 Macauley Avenue
Rice Lake, WI 54868
www.dcsnetlink.com
1.877.DCSNETLink
1.715.236.7424

Unprecedented security for your messages

Every day billions of e-mail messages are sent across the Internet. No doubt your business relies on e-mail to exchange information and keep in touch.

But today's e-mail systems are very vulnerable to a number of things. Messages can easily be intercepted and read by prying eyes. Return addresses can be forged to make messages look authentic when actually they are attempts to get you to divulge personal information. E-mails can carry viruses, and senders of malicious messages are rarely caught because their origins are virtually impossible to trace. Messages that contain sensitive information are often carelessly forwarded to unintended persons. And junk e-mail now accounts for almost 90% of all e-mail volume, clogging inboxes and wasting your valuable time.

If you need a way to securely send and receive messages and to know for certain the identity of your recipients, SafeLive SendItSecure™ is your solution. SendItSecure™ leverages the power of fingerprint biometrics to make it possible to use e-mail confidently, without additional infrastructure for your organization.

There is no e-mail product that provides a higher level of security than SendItSecure™. It can be used in any industry where private data must be exchanged conveniently and securely. Examples include medical records, personal and corporate financial data, legal documents, and product designs.

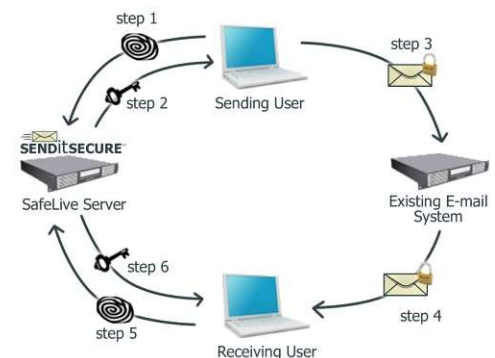
How It Works

On each computer that sends and receives SendItSecure™ messages, there is a SendItSecure™ client program. This program has functions for both sending and receiving e-mails. If you use Microsoft Outlook, SendItSecure™ plugs into Outlook through its extensible architecture. If you use some other e-



mail system, even a web-based one, SendItSecure™ has its own user interface.

The SendItSecure™ client interacts with SafeLive Corporation's secure server in order to authenticate users based on a fingerprint. When you send a message, the server authenticates your fingerprint and generates a unique encryption key

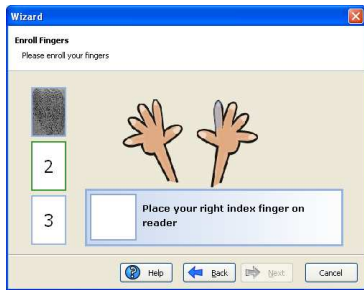


that is used to encrypt the message. For each message that is received, the server authenticates the receiver's fingerprint and returns the encryption key to the receiver so that the message can be decrypted.

The encrypted message itself is sent through ordinary e-mail servers as attachments to normal e-mails. When the receiver gets one of these e-mails, the SendItSecure™ client program will automatically be activated for the purpose of authenticating the user and decrypting the message.

The SendItSecure™ Experience

The SendItSecure™ human interface is incredibly simple. If you know how to use e-mail, interacting with SendItSecure™ is a snap. After running a quick setup program, you will need to enroll your fingerprints into your



account. The Enrollment Wizard leads you through this process with easy-to-follow instructions.

SendItSecure™ integrates with Microsoft Outlook. To send and receive secure messages, you use the Outlook

interface that you are already familiar with.

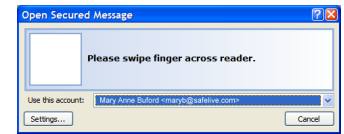
To send a secure message, just click the 'New Secure Message' button in the Outlook toolbar. Then author your message in the usual way. When you click Send, SendItSecure™ will quickly prompt you to scan your fingerprint, and the message will be on its way in just a moment.



When you receive a message that requires your fingerprint in order to read, SendItSecure™ will prompt you for your fingerprint as soon as you open the message. You just scan your fingerprint and in a second, the message will be decrypted and displayed to you.

Not an Outlook user? No problem. SendItSecure™ has its own

built-in user interface that allows you to send and receive secure messages.



You can even use web-based e-mail accounts.

Need to send a secure message to a non-subscriber? SendItSecure's Secure Message Pickup feature lets the recipient view your message on SafeLive Corporation's secure web site and even reply to it.



Visit www.SafeLive.com for more information

E-Mail Security and Biometrics Using SendItSecure™

- Health Care** — Securely exchange medical records and other patient information, meeting HIPAA requirements for privacy.
- Corporate** — Exchange sensitive financial data, product designs, and marketing plans with confidence.
- Law Enforcement** — Communicate privately with other

- agencies regarding on-going investigations.
- Professional** — Securely share sensitive information with other members of the team or communicate with your clients
- Financial Services** — Protect confidential financial information and prevent identity theft, meeting GLBA mandates.
- Personal** — Stay in touch with family and friends, knowing that your conversations remain private.

System Requirements

- Windows 2000, XP, or Vista
- Available USB port
- Fingerprint reader (see below)
- Any e-mail account (Pop3/SMTP account recommended)
- Optional e-mail program (Outlook 2003/2007 recommended for maximum integration, other e-mail clients, including web-based, can also be used)
- Internet access

Fingerprint readers from the following manufacturers can be used*: APC, Authentec, Crossmatch, Fidelica, Fujitsu, HP, Polaroid, SecuGen, Silex, Tacoma, Testech, UPEK, BIOCA, Precise Biometrics. Most laptops with built-in readers are also supported.

* Not all models from a manufacturer are supported. Check our web site for a current list.

Q & A

- What does my organization need to start using SendItSecure?** You will need fingerprint readers for each user, e-mail accounts, and a group SendItSecure™ account. Readers can be purchased from SafeLive Corporation or a third party. Your group account will allow you to create and administer your individual users' accounts through a web-based interface.
- Are my e-mail messages stored on the SafeLive server?** No. The SafeLive server is used only for authenticating senders and receivers and managing keys. SendItSecure messages are transmitted as encrypted attachments to ordinary e-mail messages. They always remain encrypted until you decrypt them on your workstation with your fingerprint. No one, including your system administrator can read your SendItSecure™ messages because they are never stored in an unencrypted state.
- Aren't there other secure e-mail products on the market? How is SendItSecure different and better?** Many other secure e-mail products are based on passwords, which are subject to compromise and easy to forget. Some use digital certificates, which are difficult to administer. SendItSecure™ ensures your identity on the basis of a natural characteristic that belongs only to you: your fingerprint. SendItSecure™ is easy to install, use, and administer, and offers a superior alternative to traditional secure e-mail products.



"Anything Computers & Everything Networks"

www.dcsnetlink.com
1.877.DCSNETLink (327.6385)